

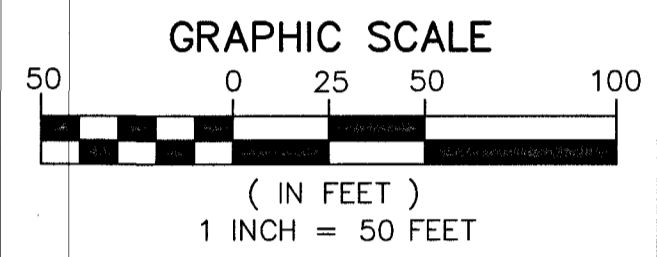
AVENIR PARCEL D

BEING A REPLAT OF A PORTION OF PARCEL "A-1", AVENIR, AS RECORDED IN PLAT BOOK 127, PAGES 85 THROUGH 109 OF THE PUBLIC RECORDS OF PALM BEACH COUNTY, FLORIDA, LYING IN SECTION 15, TOWNSHIP 42 SOUTH, RANGE 41 EAST, CITY OF PALM BEACH GARDENS, PALM BEACH COUNTY, FLORIDA

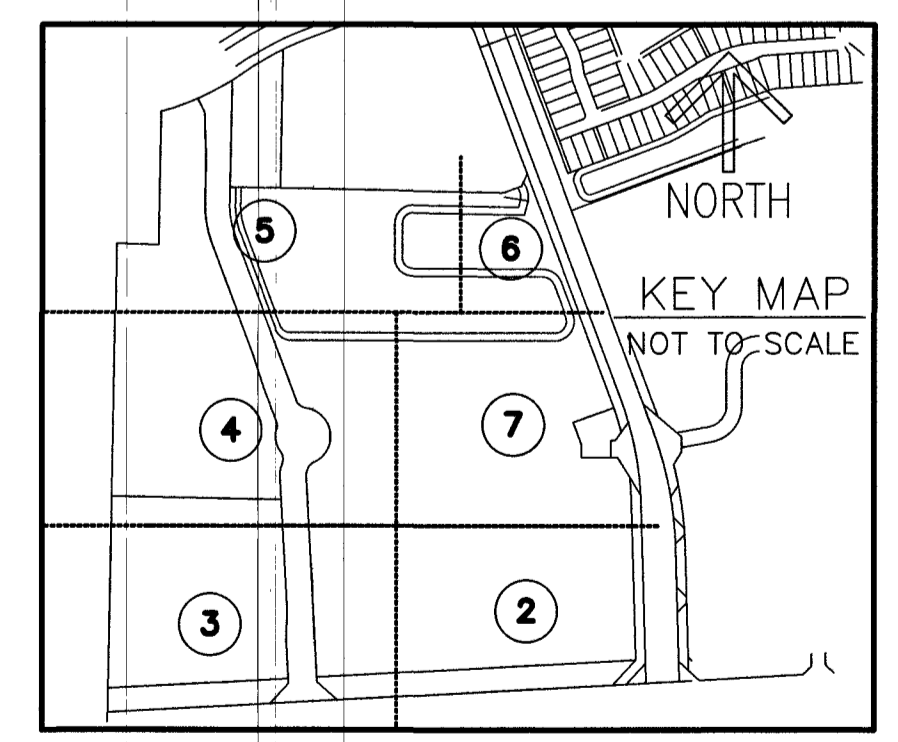
THIS INSTRUMENT PREPARED BY
RONNIE L. FURNISS
OF
CAULFIELD and WHEELER, INC.
SURVEYORS - ENGINEERS - PLANNERS
7900 GLADES ROAD, SUITE 100
BOCA RATON, FLORIDA 33434 - (561)392-1991
CERTIFICATE OF AUTHORIZATION NO. LB3591
NOVEMBER 2023

27

SHEET 7 OF 7

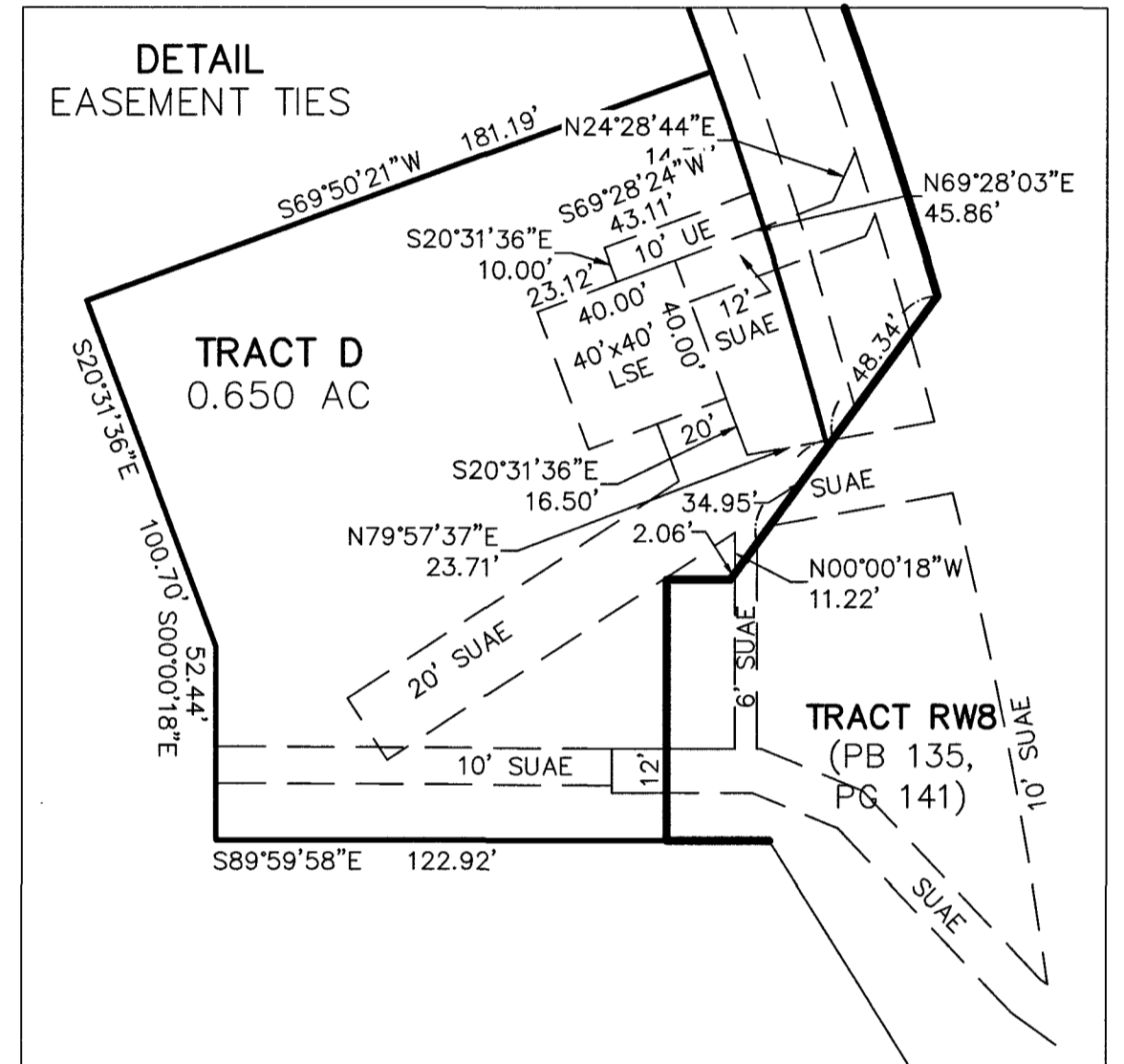
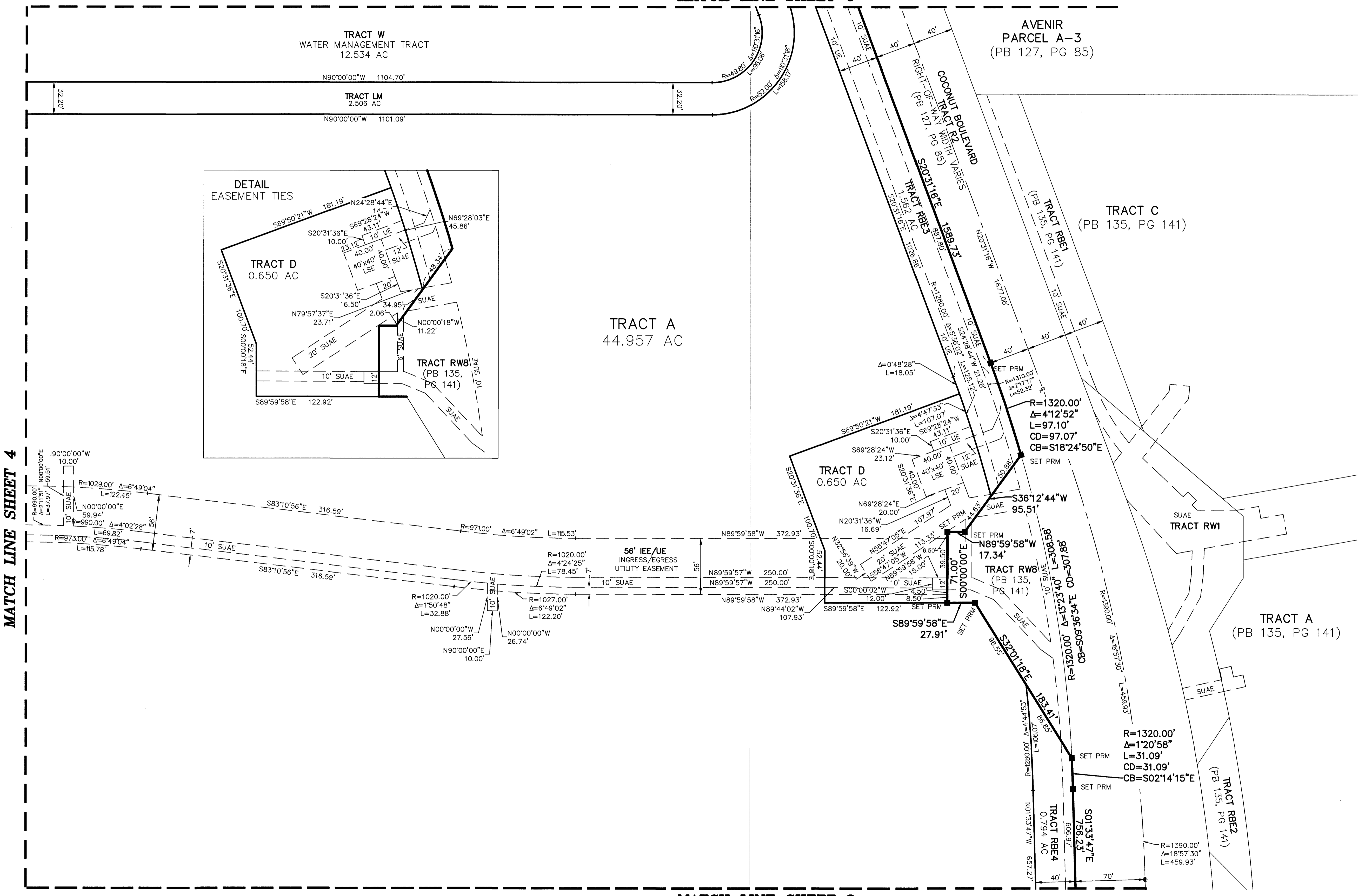


- LEGEND / ABBREVIATIONS**
- CL - CENTERLINE
 - Δ - DELTA (CENTRAL ANGLE)
 - AC - ACRES
 - CB - CHORD BEARING
 - CD - CHORD DISTANCE
 - DE - DRAINAGE EASEMENT
 - L - ARC LENGTH
 - LB - LICENSED BUSINESS
 - LBE - LANDSCAPE BUFFER EASEMENT
 - LSE - LIFT STATION EASEMENT
 - O.R.B. - OFFICIAL RECORD BOOK
 - PB - PLAT BOOK
 - PG - PAGE
 - R - RADIUS
 - (R) - INDICATES RADIAL LINE
 - (RB) - RADIAL BEARING
 - RBE - ROADWAY BUFFER EASEMENT
 - SUAE - SEACOAST UTILITY AUTHORITY ACCESS EASEMENT
 - SUAEE - SEACOAST UTILITY AUTHORITY EASEMENT
 - UE - UTILITY EASEMENT
 - PRM - DENOTES PERMANENT REFERENCE MONUMENT
5/8" IRON ROD WITH CAP STAMPED
C&W PRM LB 3591
 - - DENOTES PERMANENT CONTROL POINT



MATCH LINE SHEET 6

MATCH LINE SHEET 2



MATCH LINE SHEET 4